

LISBON DESIGN *Week*





LISBON DESIGN WEEK

22 - 26 May 2024

After the success of the first edition, LISBON DESIGN WEEK is back, from 22 to 26 May 2024, for a second round that promises to showcase the best in design and contemporary craftsmanship in Portugal. For five days, Lisbon will be buzzing with the participation of 80 venues spread across the city's various neighbourhoods, which will open their doors for exhibitions, talks, and launches of new pieces and products, among other events. A unique opportunity to see the talent and creativity of the local community in the flesh, as part of a week-long event that will definitely put Lisbon on the international design map.

ABOUT LISBON DESIGN WEEK

An annual cultural event in Lisbon that focuses on contemporary design and craftsmanship and celebrates the talent of the local creative community, Portuguese or otherwise. LISBON DESIGN WEEK features an eclectic programme that revolves around special events, from exclusive presentations, new collections, talks, masterclasses and open studios to guided visits and exhibitions, in an intersection of design with arts & crafts.



“Vision: Lisbon is creative”

This is, if you will, this year’s claim of LISBON DESIGN WEEK, which aspires to put a spotlight on Lisbon as an international epicentre for contemporary Portuguese design and craftsmanship. As part of Lisbon’s cultural calendar, LISBON DESIGN WEEK plans to captivate residents and visitors and promote the city as a creative and innovative centre, positioning itself as a relevant and influential international event, bringing collectors and visitors from all over the world.

“Mission: Lisbon is culture”

The organisation aims to create a unifying event that supports the cultural scene, reveals new local and emerging creative talent, and boosts the city’s drive and economy.

Participants are featured on a map, which is available online and in print. Ten thousand copies are distributed at various points in the city (at the showrooms of LDW participants and a selection of hotels and restaurants).



BEC DA GALHETA

BAT REDK

BBTC

Hsieh

ENERGIA



THIS YEAR'S PROGRAMME

During the five days of LISBON DESIGN WEEK, visitors will be whizzing around the 80 venues taking part in this edition, a selection of ateliers, creative studios, shops, galleries, architecture and interior design studios, schools, private spaces, hotels, restaurants, the design fair, and more. Everyone was challenged to highlight Portuguese design pieces and materials of Portuguese origin and establish unique collaborations involving artists, designers, craftspeople, architects and brands.

Each participant is working on specific events: unique collaborations for LDW, new solo and collective exhibitions, workshops, presentations, product launches, new showroom openings, special set designs, and evening events, among many others. In addition, several talks will be available to attend by invitation or pre-registration.

Everything will take place in various Lisbon neighbourhoods, grouped as follows: Estrela, Lapa & Santos; Infante Santo & Alcântara; Campo de Ourique & Rato; Príncipe Real; Chiado & Bairro Alto; Alfama, Graça & Anjos; Saldanha & Arroios; Avenida da Liberdade; and Belém.



DIOGO AMARO

HIGHLIGHTS OF THE WEEK

To make the most of all the activities taking place during LISBON DESIGN WEEK, once you have familiarised yourself with the programme, we suggest making an itinerary by area and visiting the various participants along the way. Here are some examples of what you can see:

De La Espada exhibition at OJO Gallery

Portuguese furniture brand De La Espada will be exhibiting at OJO Gallery, a space dedicated to contemporary art using ancient techniques. A new cabinet system by Atelier De La Espada, which fuses the skills of artists and artisans from various fields, will be presented in dialogue with a selection of artworks in different media, specially created for the exhibition by Victor Marqué, a French artist based in Porto, curated by Marie de Carvalho, the gallery's owner.

Wesley Sacardi installation at Novobanco Gallery

Novobanco's gallery, which houses one of the most important institutional collections of contemporary photography, will be exhibiting an installation from Wesley Sacardi's "Bigorna Fases" series, a work that explores the creative freedom of using different types and states of raw material while following the same original design. Considered a rising star in the Homo Faber guide, Wesley Sacardi reuses discarded materials to produce unique pieces with a history. A photography exhibition by Andres Serrano will be shown at the same time.



'Nossa Terra' Exhibition

Exhibition curated by Sam Baron – a French designer based in Portugal since 2001 – which he specially created for LDW, will be opening at Arquivo Manuel Aires Mateus. A selection of terracotta artefacts, one of today's most relevant materials, will be displayed on a single, 14-metre-long table. As it is locally sourced, terracotta requires little energy to fire, reflecting the customs and lifestyles of the past and future, concerning the regions from which it comes.

'Bucólica', the collection created by Oficina Marques with Andringa Studio - Creative duo Gezo Marques and José Aparício Gonçalves are launching a new collection of decorative and utilitarian ceramic pieces for dining tables. The concept for this collection was born out of a dialogue between Oficina Marques and Andringa Studio, run by interior designer Rita Andringa. The gallery will be transformed into a sensory experience highlighting the intersection between product design and environmental design, providing visitors with a unique, immersive experience. The collection explores the idea of bucolic beauty in the realm of nature in all its essence, as in William Shakespeare's "A Midsummer Night's Dream".

Lisbon Design Week & Roca exhibition: Young Design Generation

This exhibition derives from an unprecedented open-call initiative by LDW for young designers under the age of 35, hosted by Roca, one of the event's sponsors. The open call received 55 applications, which were assessed by a jury who then selected the pieces which will be part of the exhibition at the cultural space of Roca Lisboa Gallery, which will showcase the work of the next generation of Portuguese creatives or those based in Portugal.



EVA VELAZQUEZ & JIMMY BEYENS

OTHER HIGHLIGHTS:

Exhibition at Ando Living's Clubhouse, where Passa Ao Futuro will present "Campo", the first collection of the Plant Based Design Residency designed by Sam Baron and handmade by Toino Abel, as part of the Made in Platform for Contemporary Crafts & Design project. In the same space, Vasco Águas will present 'Childhood Territories', a tribute to the influence of memories and the locations that shape us.

Toni Grilo's exhibition at Coletivo 284

After the urban installation that Toni Grilo created last year for the first edition of LDW – which was acquired by the Lisbon City Council to remain permanently at Cais do Sodré – this year, the designer is presenting new pieces in different materials, including cork, marble and metal. The exhibition's centrepiece will be the 'Stella chair', a limited edition presented during the design week.

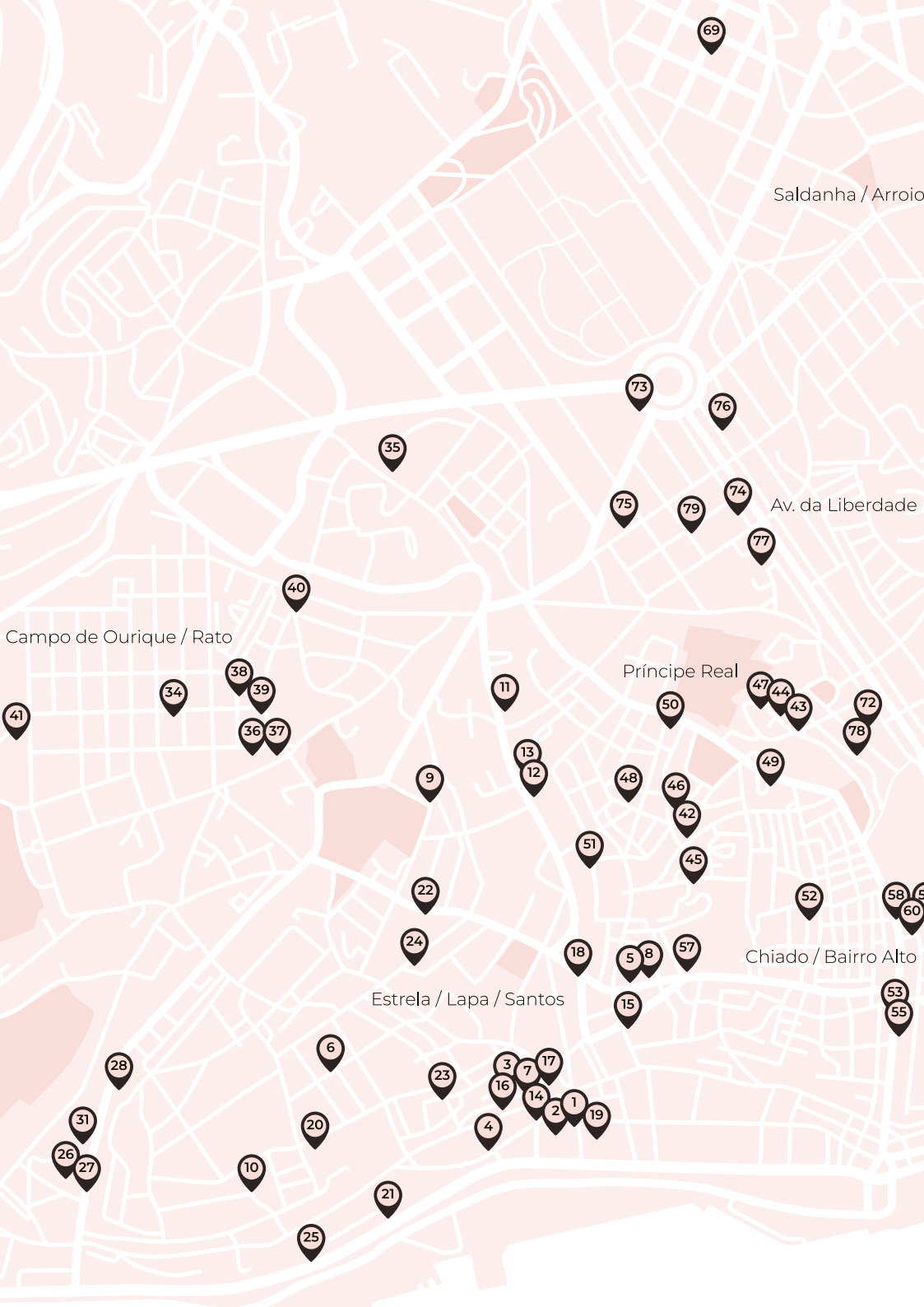
Exhibition at Flores Textile Studio, in which Indian photographer Shahid Datawala will present his work featuring Indian movie theatres from the 1930s and a Portuguese movie theatre. In dialogue with the architectural photography exhibition, Flores Textile Studio will present new pieces of scenographic furniture.

FBAUL - "Lisbon Designwise (); activation point"

The Faculty of Fine Arts becomes a cultural "activation point" with guided tours, open classes and a conversation in the courtyard between designers and non-designers about innovation in the creative territory between the Material and the Immaterial.

LDW posters by Silvia Matias

NON-OFF, Silvia Matias's graphic design studio, has designed the first LISBON DESIGN WEEK poster, a design piece that is also a manifesto and will be spread on physical and digital media in the streets of Lisbon.



COMPLETE LIST OF PARTICIPANTS

ESTRELA / LAPA / SANTOS

Antoine Proulx @Tudo e Todos
Atelier Daciano da Costa Design
Barros & Bernard (Maria Pia de Oliveira, Tito Chambino e Ju Reino da Costa)
Bryon Studios
Casa do Cura (Main Edition)
Casanova Store / Atelier Lúgia Casanova (30 Years, 30 Projects)
Cecile M* by Cécile Mestelan
Companhia Portuguesa do Chá (Julio Dolbeth & João Martins)
De La Espada @ OJO Gallery
DOMO (João Bruno)

FURTHER THER

Galeria Bessa Pereira
Galeria Reverso (Patrícia Domingues)
IADE
JAM Hotel Lisbon (Emma Cogné, Alice Pandolfo)
Juliana Penteado (studio k.)
LACS Santos (collective show curated by Rita Kroh)
Paris:Sete
Persson & Miller - Contemporary Ceramics and Art Studio
Poeira Design (Monica Penaguião)
Salted Books (Rugs by GUR & Planeta Tangerina)
Servant (Barracão | Vasco Fragoso Mendes)
Sokyo Lisbon Gallery (Joana Vilaça Studio)
Studio by Sharzadian
Tinta nos Nervos (Julio Dolbeth & Artisans Map)

INFANTE SANTO / ALCÂNTARA

Cossement Cardoso

Ligne Roset (GRAU° Cerâmica)

Maria Dezasseis (collective)

Porventura

PURA CAL Interior Design Studio (exhibition by Tomás de Castro Neves)

Rita Valadão Arquitetura & Design de Interiores (Anna Westerland, Mamoá Design)

Santo Infante (exhibition "Tempo")

UTIL

CAMPO DE OURIQUE / RATO

Arquivo Aires Mateus (Fuschini & Nossa Terra exhibition by Sam Baron + workshop EASD Valencia by MUT design)

Artlier - Escola de Artes e Ofícios

Bahú - Design com Alma (Studio Silva, Madi)

Banema Studio (Miguel Saboya)

Coletivo 284 (Toni Grilo)

Felipa Almeida

Main Edition & Marta Cypel

Violaine d'Harcourt Lightings

PRÍNCIPE REAL

deFio handmade rugs

Flores Textile Studio

Galeria Tapeçarias de Portalegre (Beatriz Horta Correia)

Lachoix (Geraldine Pillot)

Made in Situ ("Caretos" exhibition, project by Noé Duchaufour-Lawrance)

Maison Intègre Studio

MOB Projects

Studio Gameiro

Temporary installation Eva Velazquez x Jimmy Beyens

Unbox Color x World of Satinka

CHIADO / BAIRRO ALTO

Burel Factory Chiado

CABANAamad (CALEIDOSCÓPIO, Arte & Collectible Design)

Conserveira de Lisboa (Filipe Alarcão, João Xara, Lavandaria)

CUPRA City Garage (Maria Pratas)

Cutipol (Manuel Aires Mateus)

Faculdade de Belas-Artes da UL

Icon Shop & Gallery (Barbara Osorio Fabrics, Miguel Neto, Rival)

Loja das Tábuas (Matter)

Museu Nacional de Arte Contemporânea (MNAC) (Loja Art, Books & Living)

Oficina Marques & Andringa Studio (Bucólica)

Palácio Chiado (Ju Reino da Costa)

ALFAMA / GRAÇA / ANJOS

Depozito (exhibition "de Loulé")

Fantasque

Her Clique

Prime Matter Gallery (exhibition 'Terra Mater', Babled / DesGachons / Mestelan)

Santa Clara 1728 - Silent Living (Diogo Amaro)

Studio Mirante (Margaux Carel, Clotilde de Kersauson)



SALDANHA & ARROIOS

Branca by Marco Sousa Santos

Lisbon by Design

AVENIDA DA LIBERDADE

Ando Living Clubhouse (Passa ao Futuro & Vasco Águas)

Hotel Hotel (private collection)

LOEWE (Lynda Benglis)

Molteni&C (Alan Louis)

Novobanco Gallery (Wesley Sacardi)

Roca Lisboa Gallery (Young Design Generation exhibition)

Tivoli Avenida Liberdade (exhibition MILY by Felipa Almeida)

Wasted Time (collaboration with "Les Jus de Mots" by Audrey Schayes)

Wewood

BELÉM

La Junqueira Artists Residency (Max Coulon)

The detailed event programme will be available from 22 April
on the LISBON DESIGN WEEK website –

www.lisbondesignweek.pt



©Mireille Roobaert

THE FOUNDER – ABOUT MICHÈLE FAJTMANN

Born in Belgium, Michèle Fajtmann is the founder of From My City, a company formed in the UK in 2010 that creates unique events centred around artistic themes and the city. She has developed expertise in placemaking projects and has collaborated with the city of Bedford to launch, activate and animate a new urban area, including shops, restaurants, a hotel and a cinema and public spaces. She has assisted the Belgian Tourism Office in London to organize exhibitions, fairs and other events.

She is well-connected in the art scene and is particularly interested in the importance of public spaces at the heart of urban communities and the use of art & culture for networking. She is a World Organization of the Periodical Press member and a guest contributor to several London cultural blogs. She has written three books. The most recent one is a book on contemporary culture for French publisher Ateliers Henry Dougiers in which she has interviewed ten internationally acclaimed artists. She also recently published her first short story. Michèle has lived in Brussels, New York, Warsaw, London and Lisbon. She worked as a corporate lawyer for 15 years for major international firms.

In 2023, together with Julie de Halleux, she decided to create a week dedicated to Design in Lisbon, like so many other European cities. It was a starting point for promoting the quality of design, art, and crafts in Portugal, specifically Lisbon.

This year, the event's founder and director has put together a Board of Advisors, combining national and international talents and personalities from Lisbon society, contributing to the sustainable growth of LISBON DESIGN WEEK.

LISBON DESIGN*Week*

MAP & PROGRAMME

Downloadable and available
on the website from 22nd April

LISBON DESIGN WEEK ONLINE

[@lisbondesignweek](https://www.instagram.com/lisbondesignweek)

www.lisbondesignweek.pt

PRESS LOUNGE

Ando Living Clubhouse
Avenida Alexandre Herculano, 50 - 10º andar

PRESS-KIT

Images of all participants & their work are available
to use. Please send your request, by email, to the
contacts listed below.

PRESS CONTACT

Armando Ribeiro
armandoribeiro@oapartamento.com

Vera Abecassis

veraabecassis@oapartamento.com

PROJECT BY

FROM MY CITY

MAIN SPONSOR

DE LA ESPADA

SPONSORS

novobanco



ANDO
Living

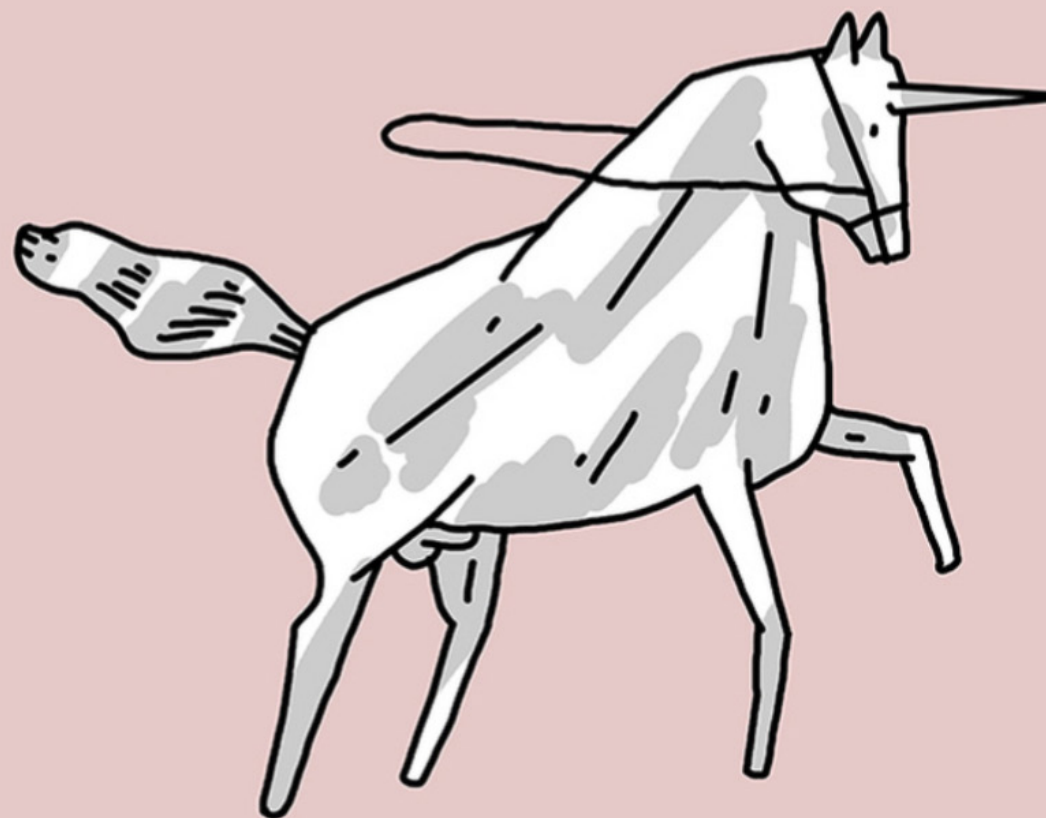
Roca



PARTNERS



ABSOLUT.



JULIO DOLBETH